

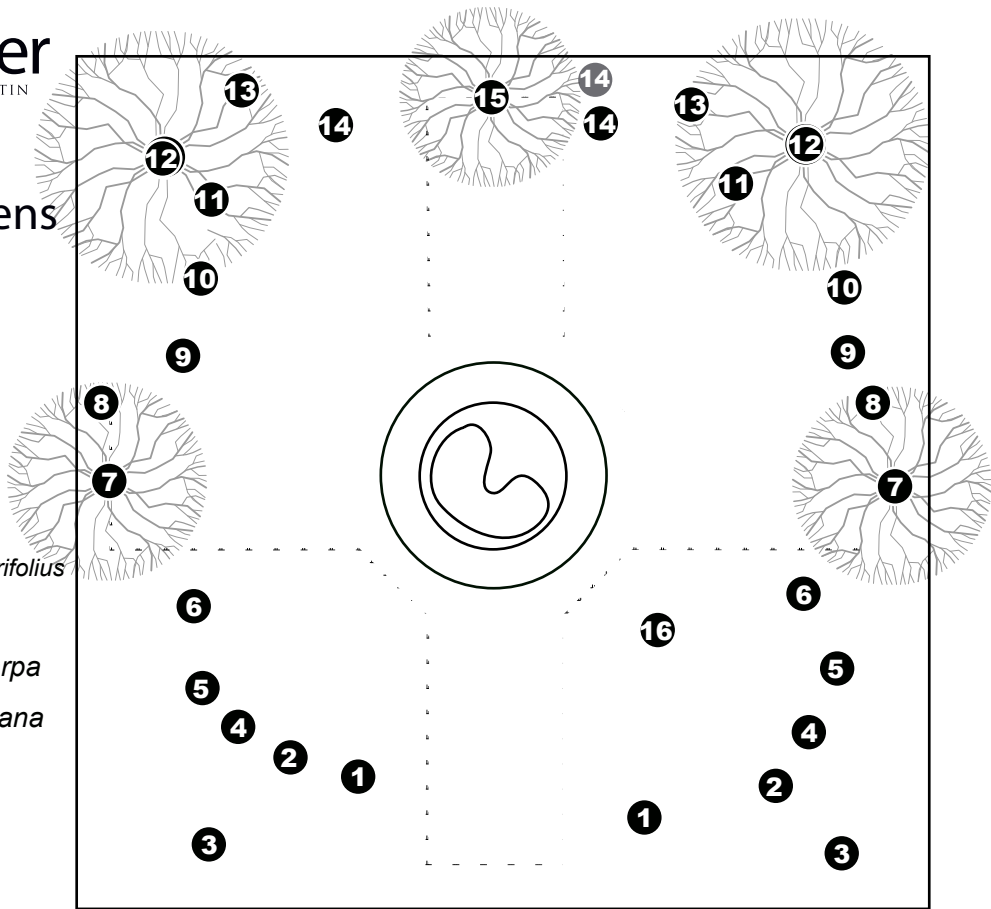
Homeowner Inspiration Gardens
Formal Design

Plants

- 4** **Cut-Leaf Penstemon** *Penstemon baccharifolius*
- 5** **Gayfeather** *Liatris mucronata*
- 6** **Missouri Primrose** *Oenothera macrocarpa*
- 8** **Spineless Prickley Pear** *Opuntia ellisiana*
- 9** **Prairie Fleabane** *Erigeron modestus*
- 10** **Twisted-Leaf Yucca** *Yucca rupicola*
- 11** **Wright's Skullcap** *Scutellaria wrightii*
- 13** **Autumn Sage** *Salvia greggii*
- 14** **Mexican Feathergrass** *Nassella tenuissima*
- 16** **Buffalo Grass** *Bouteloua dactyloides*

Trees/Shrubs

- 1** **Dwarf Yaupon Holly** *Ilex vomitoria "nana"*
- 2** **Resinbush** *Viguiera stenoloba*
- 3** **Agarita** *Mahonia trifoliolata*
- 7** **Texas Persimmon** *Diospyros texana*
- 12** **Eastern Red-Cedar** *Juniperus virginiana*
- 15** **Big Tooth Maple** *(Acer grandidentatum)*



Notes:

It is a misconception that gardens designed with native plants must look "wild". This formal design is based on symmetry, clean lines, plant architecture and geometric shapes. The plants in this garden are all native to the Texas Hill Country.